

All Pupil II

 **Riester**

The familiar way

All Pupil II

Brighter and whiter light for an efficient diagnosis



NEW!
All Pupil II LED
Volk lenses



All Pupil II

High-contrast, clear images with the world's leading Keeler optics.

Riester's All Pupil II uses specially coated and individually laser-cut lens for best sight – every day.

Light and comfortable

The indirect ophthalmoscope by Riester weighs only 730 grams in the wireless version, including high-performance lithium-ion battery. It also comes equipped with a especially soft and comfortable upholstered headband.

Simple operating elements

All Pupil II only has a unique single control to change aperture size and position in one movement to view through all pupil sizes.

IR and UV filter

An IR and UV filter is integrated for the patient's best possible protection. Easy and fast bulb replacement. Easily accessible bulbs enable rapid bulb replacement for uninterrupted work.

Easy and fast bulb replacement

Easily accessible xenon bulb or LED for working with as few interruptions as possible.

Extraordinary adjustable light intensity even under the most difficult examination conditions, simple to adjust.

Why have operating elements on the wall when the instrument is on your head! The All Pupil II has ergonomically adjustable lighting; in addition to the xenon version available up to now, it is currently available also in an innovative and high-performance LED version that is setting the standard.

All Pupil II LED

- Brighter and whiter light for an efficient diagnosis
- No longer necessary to keep buying replacement lamps
- The LED has a life expectancy of approx. 10,000 h
- 5 year warranty
- Upgradeable Bye-bye xenon lamp, hello LED!

LED
inside



All Pupil II LED

Cable connected or wireless power supply

All Pupil II is available in various versions.

Either with wall attachment and cable connected power supply for stationary use, as a mobile version with high-performance battery pack attached to the belt or as a completely wireless version for absolute freedom of movement without compromise. In this version a balanced Li-ion battery pack is attached to the rear of the browband. For best comfort while maintaining full lighting performance.



Portable battery pack for wired All Pupil II



Wireless All Pupil II



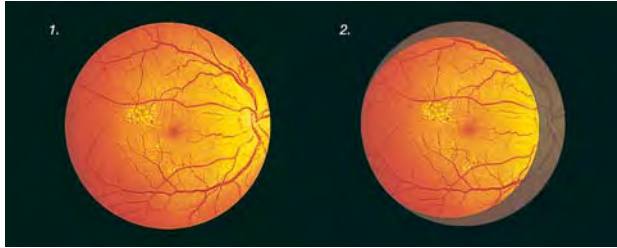
All Pupil II with wall holder



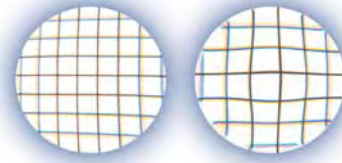
Pupil distance: 47 – 75mm

Wide-angle diffuser

The wide-angle diffuser eliminates shadows at the edge of the lens, which enlarges the field of vision considerably. The light through the diffuser is also more pleasant for the patient.



Fundus display with a Volk lens (1. with diffuser, 2. without diffuser)



View onto a 2mm grid through a Volk 20D (left) and a competitors lens (right)



The standard for ophthalmological lenses



Volk 20D



Pan retinal® 2.2



Volk 28D

BIO lenses	Field of vision	Image magnification	Working distance	Primary application	Order number
Macula Plus 5.5	36°/43°	5.50x	80mm	High-resolution view of the central fundus	12789
14D Large	36°/47°	4.30x	75mm	Highly magnified view of the central fundus	12790
15D Large	36°/47°	4.11x	72mm	Highly magnified view of the central fundus	12791
20D Large	46°/60°	3.13x	50mm	General diagnosis and treatment	12792
Pan Retinal 2.2	56°/73°	2.68x	40mm	General diagnosis and treatment	12793
25D Large	52°/68°	2.54x	38mm	Diagnosis and treatment of the medial fundus	12794
28D Large	53°/69°	2.27x	33mm	Diagnosis and treatment of narrow pupils	12795
30D Small	46°/60°	2.10x	30mm	Compact size for easy use on the eye	13002
30D Large	58°/75°	2.15x	30mm	Diagnosis and treatment of narrow pupils	12796
40D Large	69°/90°	1.67x	20mm	Pediatric ophthalmoscopy / veterinary applications	12797
20D ACS®	46°/60°	3.13x	50mm	Autoclavable version of the 20D	13000
28D ACS®	53°/69°	2.27x	33mm	Autoclavable version of the 28D	13001

You can find the entire Volk range in our separate Volk brochure.

All Pupil II

Order numbers:

All Pupil II is available in the following combinations:

All Pupil II	Order number
Wireless All Pupil II LED with lithium-ion battery pack and charging station	3992
Wireless All Pupil II Xenon with lithium-ion battery pack and charging station	3990
Wired All Pupil II LED without power supply	3993
Wired All Pupil II Xenon without power supply	3991
Accessories	Order number
Portable battery pack for wired All Pupil II Xenon/LED (for order number 3991+3993)	12780
Stationary wall attachment for wired All Pupil II Xenon/LED (for order number 3991+3993)	12781
All Pupil II teaching mirror (Fig. 1)	12782
All Pupil II Xenon bulbs (double pack)	12783
LED for All Pupil II	12779
Large depressor (Fig. 2)	12784
Small depressor (Fig. 2)	12785
Fundus charts	12786
Bag for All Pupil II (Fig. 3)	12787



Fig. 1



Fig. 2



Fig. 3

Complete sets	Order number
Set I : Wireless All Pupil II Xenon with lithium-ion battery pack and charging station - teaching mirror, large and small depressor, fundus charts, Volk 20D lense, complete in the box	3995
Set I : Wireless All Pupil II LED with lithium-ion battery pack and charging station - teaching mirror, large and small depressor, fundus charts, Volk 20D lense, complete in the box	3994
Set II : Wired All Pupil II Xenon with portable battery pack - teaching mirror, large and small depressor, fundus charts, Volk 20D lense, complete in the box	3996
Set II : Wired All Pupil II LED with portable battery pack - teaching mirror, large and small depressor, fundus charts, Volk 20D lense, complete in the box	3998
Set III : Wired All Pupil II Xenon with stationary wall holder - teaching mirror, large and small depressor, fundus charts, Volk 20D lense, complete in the box	3997
Set III : Wired All Pupil II LED with stationary wall holder - teaching mirror, large and small depressor, fundus charts, Volk 20D lense, complete in the box	3999

further information on www.riester.de

Subject to alterations

Instruments for E.N.T.
Ophthalmology and Dermatology